



## COMPOSICIÓN

Fijo

## MEDIDAS

Altura 195 cm.

Largo 70-80 cm.

Grosor cristal 6 mm.

Largo 80-140 cm.

Grosor cristal 8 mm.

## ACABADO

Vidrio Transparente  
Decorado  
Urban grid

Aluminio Cromo  
Negro  
Oro cepillado  
Oro rosa  
Blanco mate

## COMPLEMENTOS

Tratamiento antical incluido  
Brazo telescópico Inox.

## OPCIONES

Medidas personalizadas

## GARANTÍA

3 años

## CERTIFICADOS

EN14428 - Mamparas de ducha  
EN12150 - Vidrio templado



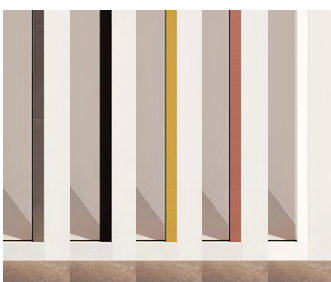
Perfilería negra



Vidrio decorado



Vidrio Urban Grid



Perfiles en 5 acabados



# VERIFICATION OF CONFORMITY

No. IN-GZ-CP-5627-25030

It has been stated that the construction product

## SHOWER DOOR

Description of the product(s):

**Product Model: RIMINI**

Intended use: **Personal hygiene under system 4**

placed on the market by

**TORVISCO BATHROOMS DESIGN INTERNATIONAL LIMITED**

UNIT 305-7,3/F.,LAFORD CENTRE,NO 838 LAI CHI KOK ROAD,KOWLOON,HONGKONG

and produced in the manufacturing plant

**TORVISCO BATHROOMS DESIGN INTERNATIONAL LIMITED**

UNIT 305-7,3/F.,LAFORD CENTRE,NO 838 LAI CHI KOK ROAD,KOWLOON,HONGKONG

is submitted by the manufacturer to the further testing of samples taken at the factory in accordance with a prescribed test plan and that the third party- SGS-CSTC Standards Technical Services Co., Ltd. has performed the determination of the product type as required for Regulation 305/2011/EU and the assessment and verification of conformity at system 4.

This verification attests that type testing or type calculation described in Annex ZA of the standard

**EN 14428:2004+A1:2008** was applied and that the relevant test report no. are

**GZIN2501000048CM05\_EN**

This verification is customer voluntary act and refers to the tested samples only-type representative of the tested product.

The manufacturer is obligated to apply factory production control.

This verification is valid from **May. 13, 2025** until **May. 12, 2028** and remains valid as long as the manufacturing conditions in the plant or the factory production control itself are not modified significantly.

The general principles set out in Article 30 of Regulation (EC) No 765/2008 shall apply to the CE marking. The CE marking shall be affixed to those construction products for which the manufacturer has drawn up a declaration of performance.

**Issue 1. Verified since May. 13, 2025**

Authorised by



**SGS-CSTC Standards Technical Services Co., Ltd.**

16F Century Yuhui Mansion No.73, Fucheng Road, Haidian District Beijing, China 100142

email CN.CONSTProdcert@sgs.com website www.sgs.com

**Bill Liang**

Southern District Industrial Service Lab. Manager